

On the Internet at
www.mmakorea.co.kr



MMA Korea Co., Ltd.

Health & Hospital Care

Mega Center # 210 SK Technopark, 190-1 Sangdaewon-Dong,
 Choongwon-Gu, Sungnam-Si, Kyunggi-Do, Korea.

Phone : +82 2 585 3808 Fax : +82 2 585 3809

E-mail : mmakorea@kornet.net, intl@mmakorea.co.kr

Website : www.mmakorea.co.kr

Distributed by

• The actual products may differ from the picture, specifications and description in this publication.

• 출판물에 게재된 실제품의 설명, 제원 및 사진은 실물과 다를 수 있습니다.

Medical Gas Distributions



Medical Gas Distributions



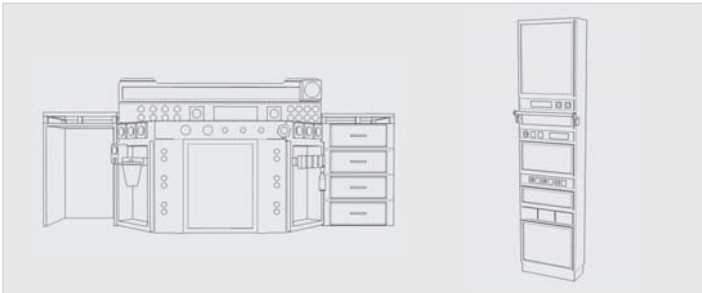
MODEL : MSV Series



Zone Valve Service Unit

In case of emergency or maintenance, Dumed zone valve service unit is used to stop the flow of medical gas or prevent vacuum in the medical gas distribution pipeline.

- The valves are 3 pcs full port
- Valve Box is available in the recessed model from 1 to 6 functions
- Colored gas identification
- Line pressure monitoring gauge is supplied
- 100% hydrostatic tested



INTENSIVE CARE UNIT (ICU)

Gas Terminal Unit

- 100% hydrostatic testing of each outlet and cleaned for medical gas service
- Indexed to eliminate interchangeability of gas services
- 360° swivel inlet pipe for easy installation
- Complies with HTM 2015, 2022, European, NFPA and ISO Standards.



BS TYPE



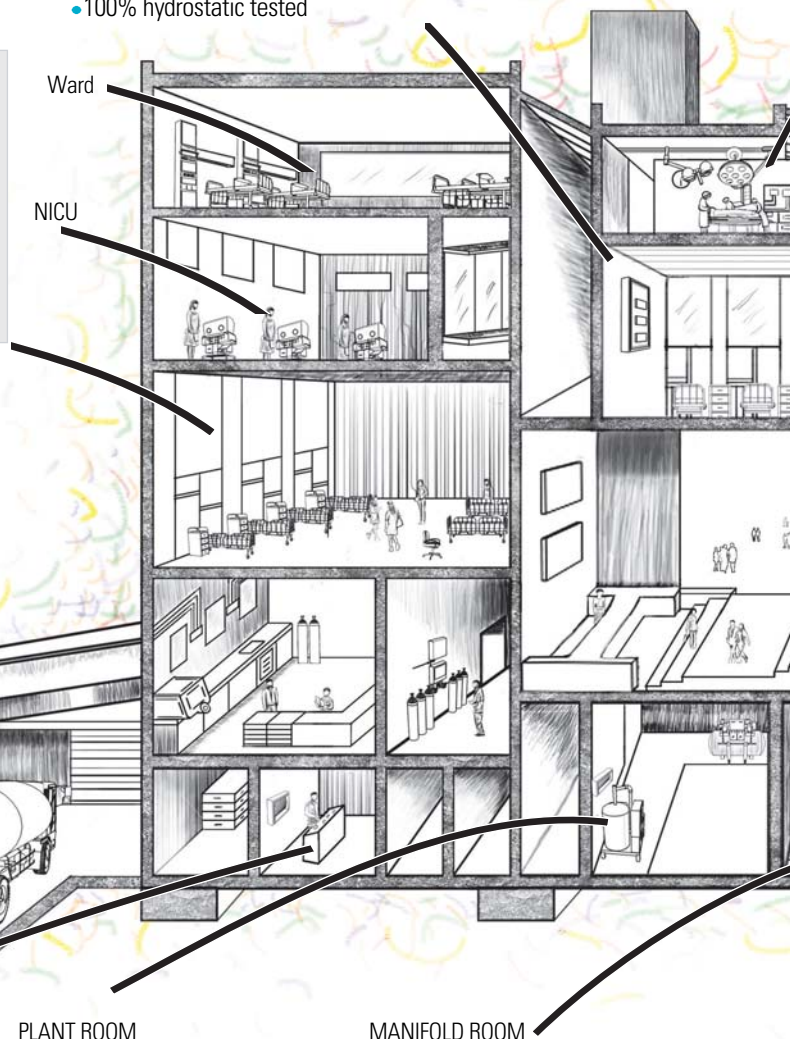
DIN TYPE



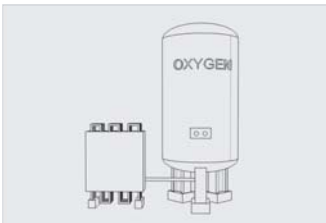
PIN TYPE



Ohmeda TYPE



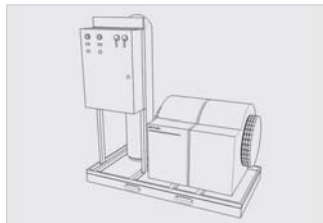
LIQUID OXYGEN STORAGE TANK



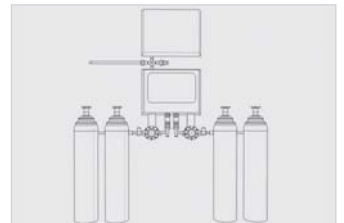
GAS CONTROL ROOM(MASTER ALARM)



PLANT ROOM



MANIFOLD ROOM



Nitrogen/Air Control Panel

Dumed Gas Control Panel is design as an operating room, control the high pressure(200PSI MAXIMUM). Nitrogen (Air) pipeline system is used to power turbine - driven surgical tools such as medical drill. The pressure regulator is adjustable between 0 to 490 PSI valve to indicate the inlet supply pressure. The outlet shall be monitorized by a pressure indicator with a range of 0-220 PSI.

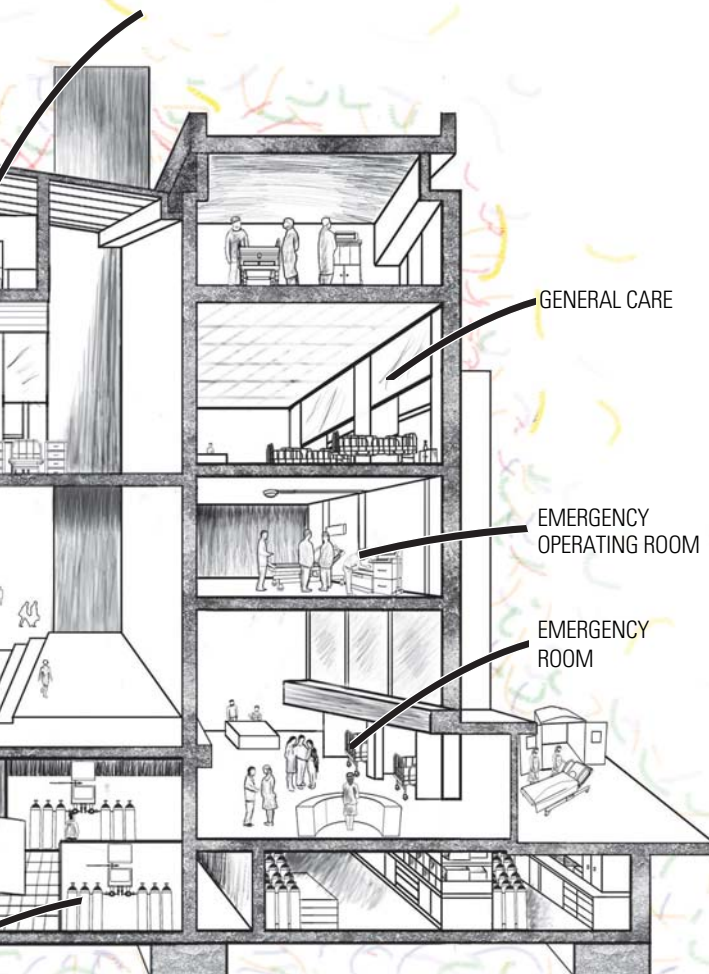


MODEL : MNP- CP

Digital Display Medical Gas Alarm

Dumed digital alarm system shall provide master and area alarm signals in digital display. All field wiring and signals shall be self-monitoring and the closed circuit type with fault signal on an open circuit. The digital alarm system shall be comprised 3 basic modules, power supply module, digital module, and sensor module.

- Digital display module as master or area alarm
- Self diagnostic and error message display for easy of maintenance
- Repeat alarm, adjustable from 1 to 60 minute or off
- Module can be upgraded in the field of interface to the building management system
- Led alarm lights utilized for long life
- Modular design
- Gauge Display Alarm is also available on request



Anesthesia Gas Scavenging System

Excess gas purging system are designed to safety remove exhaled anesthetic gas from operating room environment sourced by anesthesia machine and preventing contamination of the operating room and providing a safe and healthy workspace for treatment. Control panel shall be mounted on the wall in operating room and this system shall be operated by air pressure with connection of excess gas outlet from anesthesia machine.



MODEL : MAA Series



MODEL : MMA Series



MODEL : MAGSS

